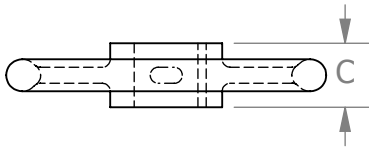
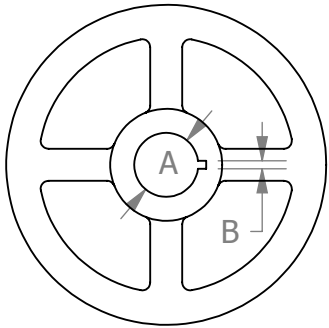


Hand Wheel Replacement Data Sheet

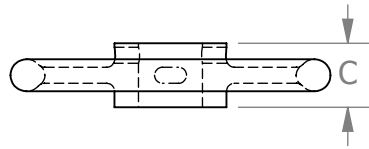
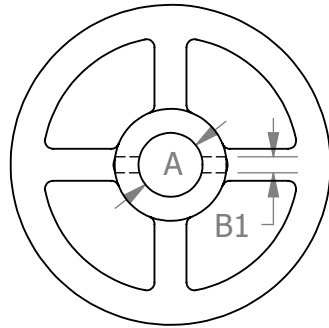
For use when specifying all Roto Hammer "Direct Mount", Chain Wheels (E Series or M Series), Hand Wheel or Extensions. The specified dimensions can be determined by measuring the shape and size of the bore in the existing hand wheel or by measuring the corresponding dimensions from the valve actuator riser or shaft.

For Shapes Not Shown, Please Include Dimensional Sketch With Order.

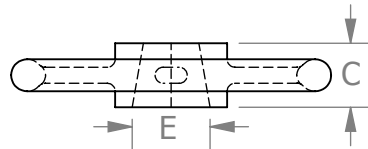
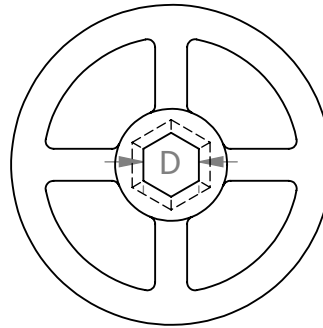
Round Hole w/ keyway



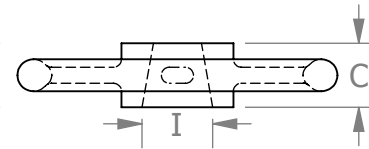
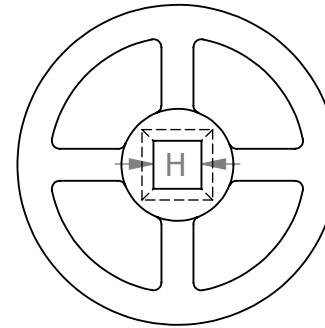
Round Hole w/ crossdrill



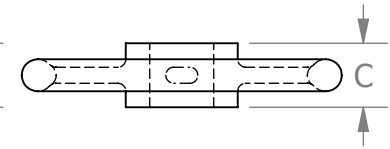
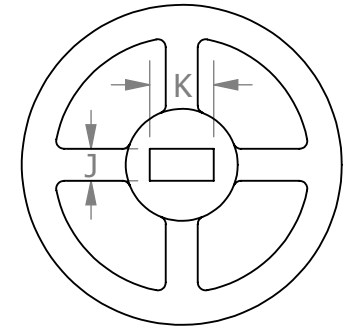
Hex Hole



Square Hole



Rectangle Hole



Note: Be sure to specify "C" dimension also.

EXAMPLE

ORDERING INSTRUCTIONS

4" Crane 47	E12							1.52	1.54	0.87						
12" H.W.																
Valve Size,	Roto	ROUND HOLE			ROUND HOLE			HEXAGON			SQUARE			RECTANGLE		
Mfg., Fig. No.,	Hammer	W/ KEY WAY			W/ CROSS DRILL			HOLE			HOLE			HOLE		
Hand Wheel Dia.	Mod. No.	A	B	C	A	B1	C	D	E	C	H	I	C	J	K	C



Hand Wheel Dimensions: Measurement Guide

For use when ordering Roto Hammer Adapters, E and M Series Direct Mount Chain Wheels, Hand Wheels, and Extensions.



Step 1: Unscrew the retaining nut and remove the hand wheel from the existing valve.

Step 2: Measure the hand wheel dimensions and fill out the **Hand Wheel Replacement Data Sheet** so your chain wheel, hand wheel, or extension can be machined to your exact specifications. The hand wheel depicted below shows a hex hole. Other options include: round hole with keyway or crossdrill, square hole, or rectangle hole.



Measure the "D" and "E" Dimensions
(For Hex Hole, measure flat-to-flat)



Measure the "C" Dimension (hub thickness)